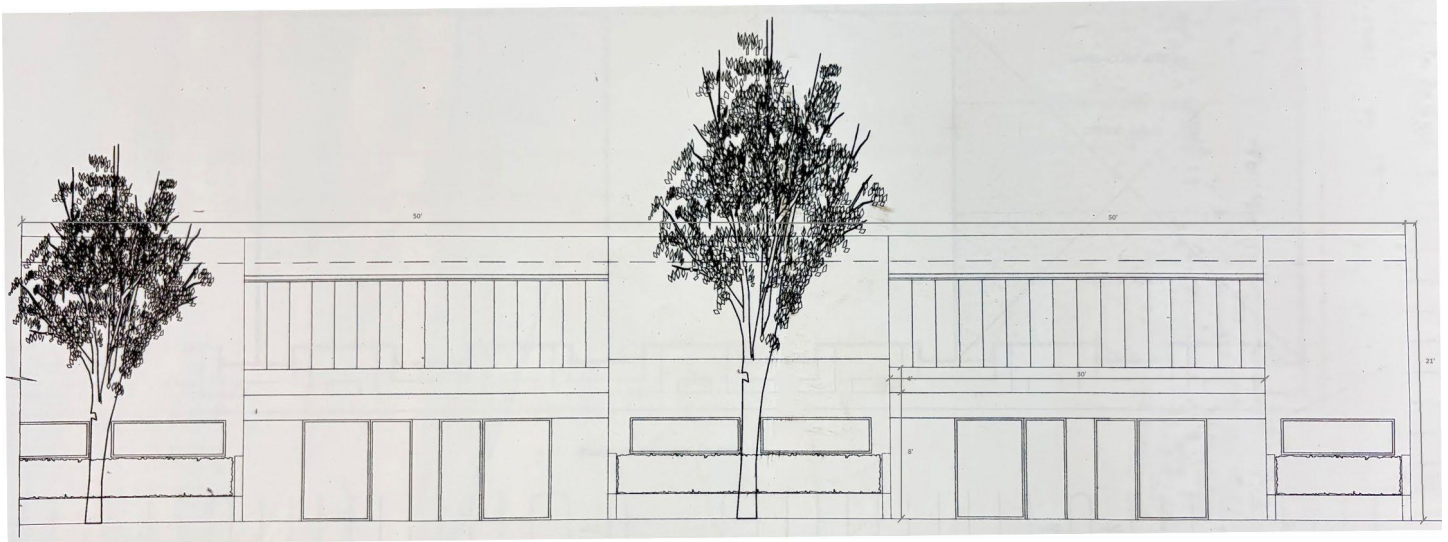


### SECTION 3B: TYPICAL TENANT BAY ELEVATION (EXAMPLE)

The elevation below illustrates a typical combined tenant bay unit at 1800 N. Powerline Road. Key dimensions shown: 50-foot wide facade, 21-foot building height, 4-foot sign band height, and 30-foot sign band width. The empty sign band represents the designated area for future tenant signage, to be designed and installed in accordance with the standards set forth in Section 2 of this Master Sign Program.



Typical combined bay unit - 50 ft West Facade. Sign band (4 ft H x 30 ft W) shown empty to represent available sign area for future tenant. All signage shall comply with Section 2 standards and Chapter 156 of the Pompano Beach Sign Code.

